



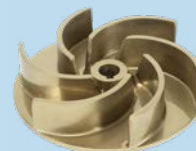
DG 80-102



DG 150



DG 80-102



DG 150



Drainage pumps with set-back Vortex type impeller for pumping sewage waters and liquids with suspended solids; ideal for civil and household applications. The single-phase version includes a built-in capacitor, a thermal protector and it can be equipped with a float switch.

Construction features

Pump body cast iron

Shell, motor cover, base support stainless steel



Impeller Vortex stainless steel (80-102); brass (150)

Mechanical seal double seal with oil barrier: pump side with silicon carbide mechanical seal; motor side with sealing ring (80-102) or ceramic-graphite mechanical seal (150)

Motor shaft stainless steel AISI 430

Free passage Ø max 35 mm (80-100)
Ø max 50 mm (82-150)

Max submergence 5 m

Liquid temperature 0 - 40 °C

Cable H07 RN8F, 10 m

G float switch

Motor

3- 400V-50Hz

2 Poles induction motor 1- 230V-50Hz
(with thermal protection)

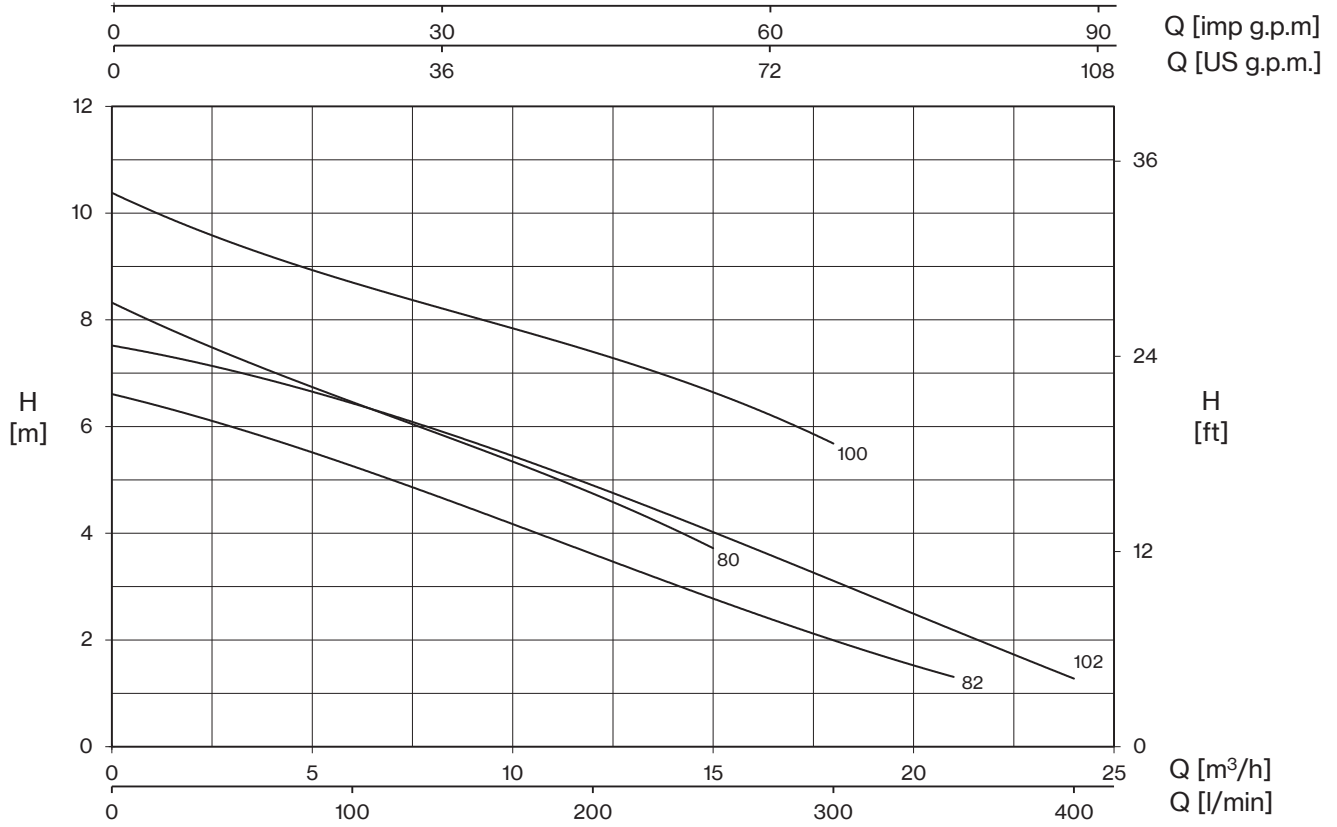
Insulation class F

Protection degree IPX8

TYPE	LOTS			
	TRUCK		CONTAINER	
	PALLET (cm)	N° pumps	PALLET (cm)	N° pumps
DG 80-102	80×120×145	48	80×120×190	76
DG 150	80×120×160	51	80×120×160	51

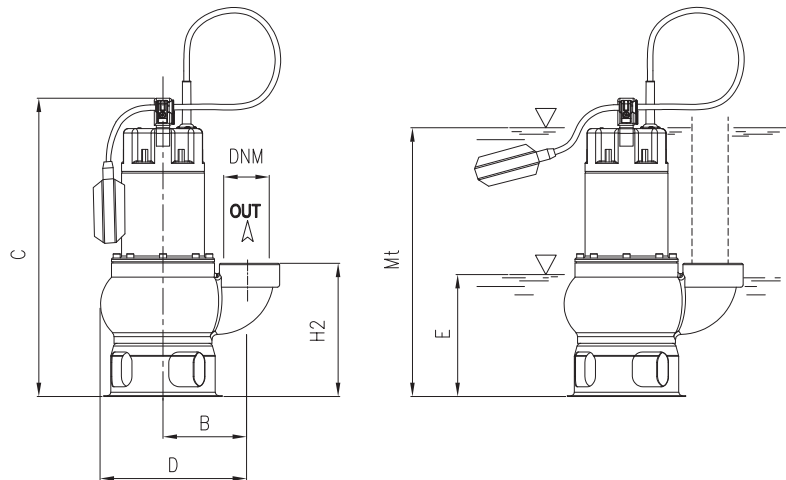


DG



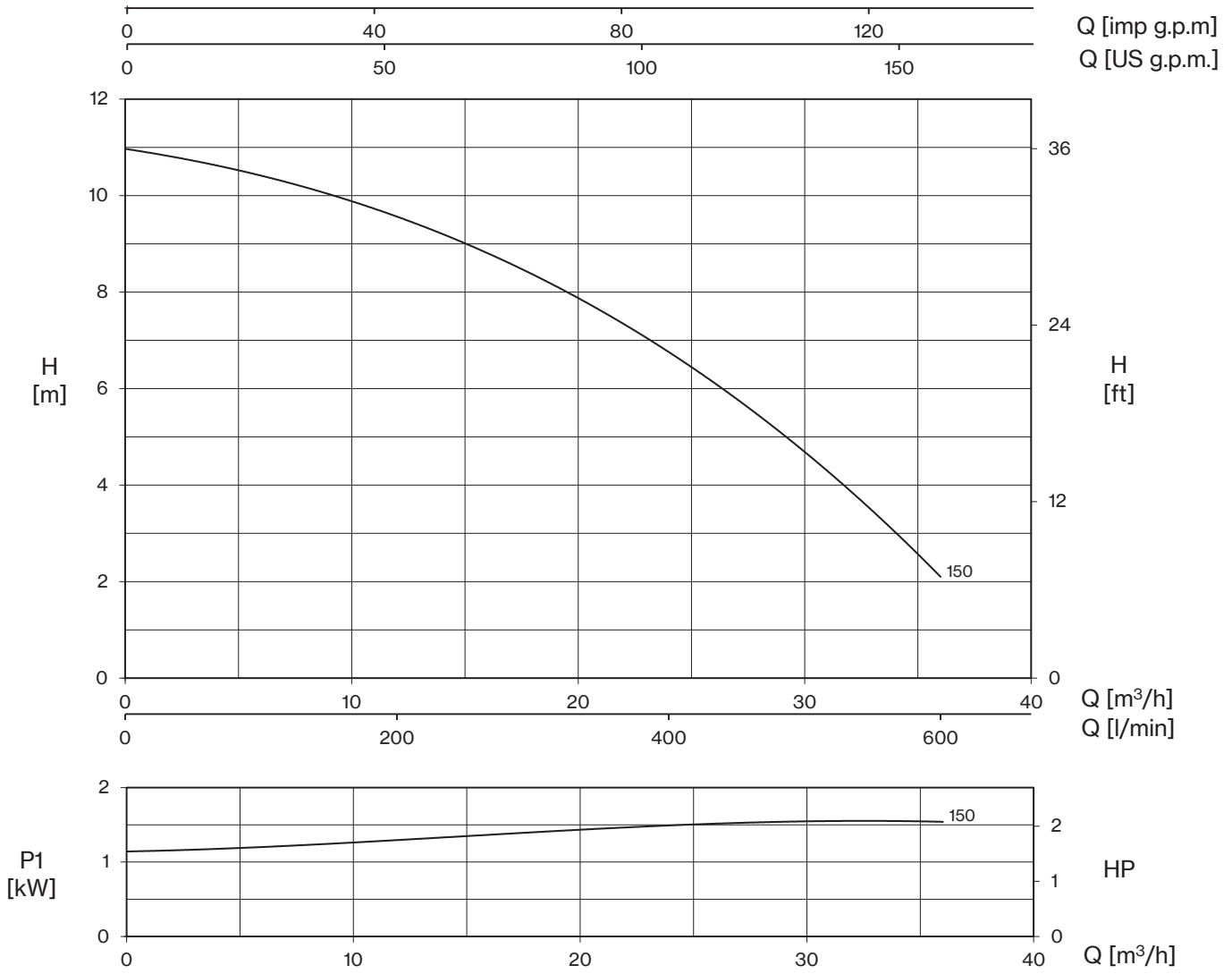
TYPE		W	AMPERE		Q (m³/h - l/min)									
1~	3~		1~	3~	0	3	6	9	12	15	18	21	24	
			1x230 V 50 Hz	3x400 V 50 Hz	0	50	100	150	200	250	300	350	400	
H (m)														
DG 80 (G)	DGT 80	1050	4,7	2,2	8,3	7,4	6,4	5,6	4,8	3,7				
DG 80/2 (G)	DGT 80/2	1050	4,7	2,2	8,3	7,4	6,4	5,6	4,8	3,7				
DG 100 (G)	DGT 100	1350	6,2	2,8	10,4	9,4	8,7	8,1	7,4	6,6	5,7			
DG 100/2 (G)	DGT 100/2	1350	6,2	2,8	10,4	9,4	8,7	8,1	7,4	6,6	5,7			
DG 82 (G)	DGT 82	1000	4,5	2,1	6,6	6,0	5,3	4,4	3,6	2,8	2,0	1,3		
DG 102 (G)	DGT 102	1200	5,3	2,4	7,5	7,1	6,4	5,7	4,9	4,0	3,2	2,1	1,3	

E: maximum emptying level
 Mt: minimum liquid level for
 continuous duty



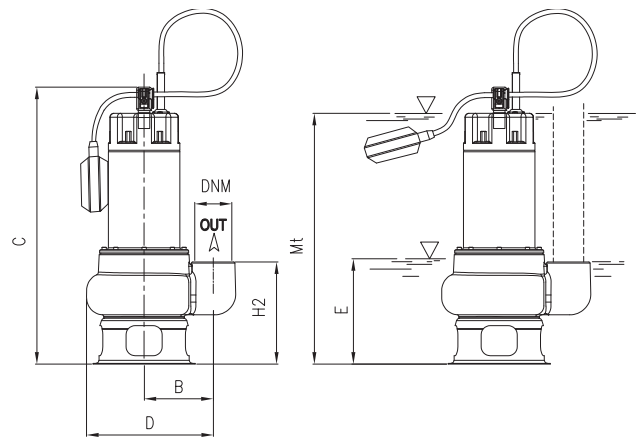
TYPE	DIMENSIONS (mm)										 Kg
	B	C	D	E	H2	Mt	DNM	I	L	M	
DG 80 (G)	110	410	230	140	174	290	1"1/2G	250	183	448	13,5
DG 80/2 (G)	110	410	230	140	174	290	2"G	250	183	448	14
DG 100 (G)	110	410	230	140	174	290	1"1/2G	250	183	448	15,5
DG 100/2 (G)	110	410	230	140	174	290	2"G	250	183	448	15,5
DG 82 (G)	120	426	250	150	190	300	2"G	264	203	482	15
DG 102 (G)	120	426	250	150	190	300	2"G	264	203	482	16





TYPE		W	AMPERE		Q (m ³ /h - l/min)						
1~	3~		1~	3~	0	6	12	18	24	30	36
					0	100	200	300	400	500	600
			1x230 V 50 Hz	3x400 V 50 Hz	H (m)						
DG 150 (G)	DGT 150	1550	7,1	2,9	11,0	10,4	9,6	8,3	6,8	4,6	2,1

E: maximum emptying level
 Mt: minimum liquid level for continuous duty



TYPE	DIMENSIONS (mm)										Kg
	B	C	D	E	H2	Mt	DNM	I	L	M	
DG 150 (G)	142,5	461	247,5	185	170	390	2" G	200	260	470	19

