

PUMPS








CE



DA PUMP

CONTENT

SELF-PRIMING JET PUMP

	_____	MJSW	01
	_____	MJS	02
	_____	MCP	03
	_____	2MCP	04
	_____	MHF	05

PUMP

1. Cast iron pump body
2. Brass / PPO impeller
3. AISI 304 shaft
4. Max. liquid temperature: +60°C
5. Max suction: +9m

MOTOR

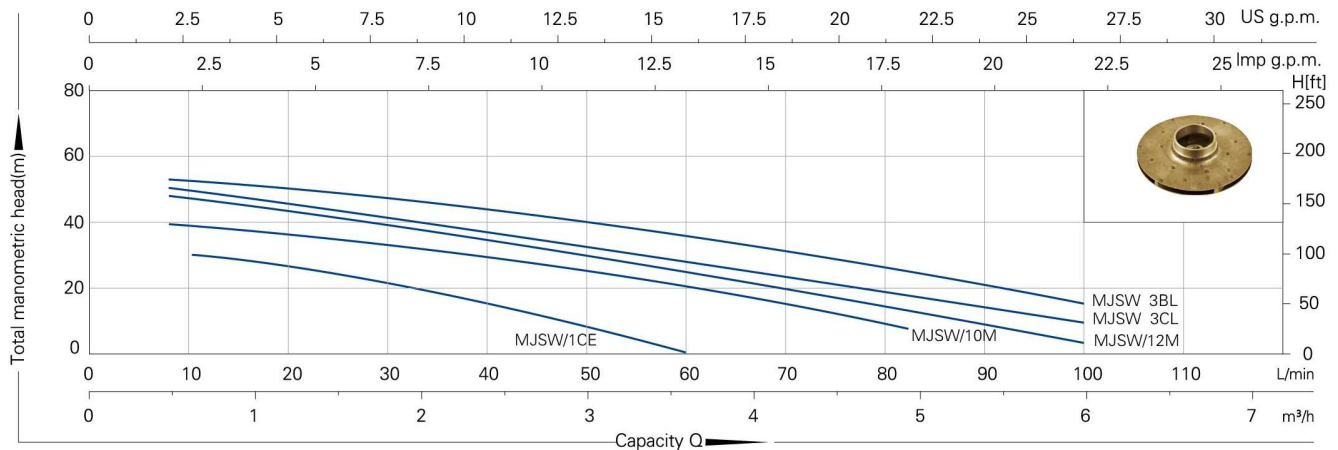
1. C&U bearing
2. Motor with copper winding
3. Built-in thermal protector for single phase motor
4. Insulation class: B
5. Protection class: IP44
6. Max. ambient temperature: +40°C



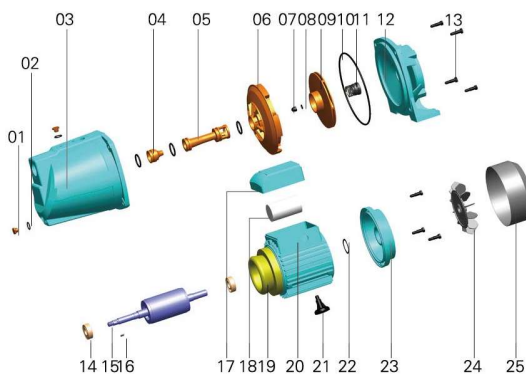
MJSW

SELF-PRIMING JET PUMP SERIES PERFORMANCE CHART AT n=2900r/min

PUMP TYPE	POWER		INLET/OUTLET	MAX.FLOW	MAX.HEAD	MAX.SUCT	G.W.	PACKING DIMENSION	QTY
	kW	HP							
MJSW/1CE	0.37	0.50	1"X1"	60	30	9	10.5	395X186X214	1870
MJSW/10M	0.75	1.00	1"X1"	85	42	9	14.0	445X193X230	1420
MJSW/12M	0.92	1.25	1"X1"	85	48	9	16.5	564X235X260	810
MJSW 3CL	1.10	1.50	1 1/4"X1"	100	48	9	25.0	565X225X260	850
MJSW 3BL	1.50	2.00	1 1/4"X1"	110	55	9	26.0	565X225X260	850



THE STRUCTURE, CODE AND NAME OF THE PUMP



NO.	NAME	NO.	NAME	NO.	NAME
01	Copper plug	10	"O" ring	19	Stator
02	"O" ring	11	Mechanical seal	20	Base
03	Pump casting	12	Pump support	21	Arm-brace
04	Venturi nozzle	13	Hexagonal head bolt	22	Wave washer
05	Venturi tube	14	Bearing	23	End plate
06	Diffuser	15	Rotor	24	Fan
07	Cap nut	16	Key	25	Fan cover
08	Gasket	17	Capacitor box		
09	Impeller	18	Capacitor		

PUMP

1. Stainless steel pump body
2. PPO impeller
3. AISI 304 shaft
4. Max. liquid temperature: +60°C
5. Max suction: +9m

MOTOR

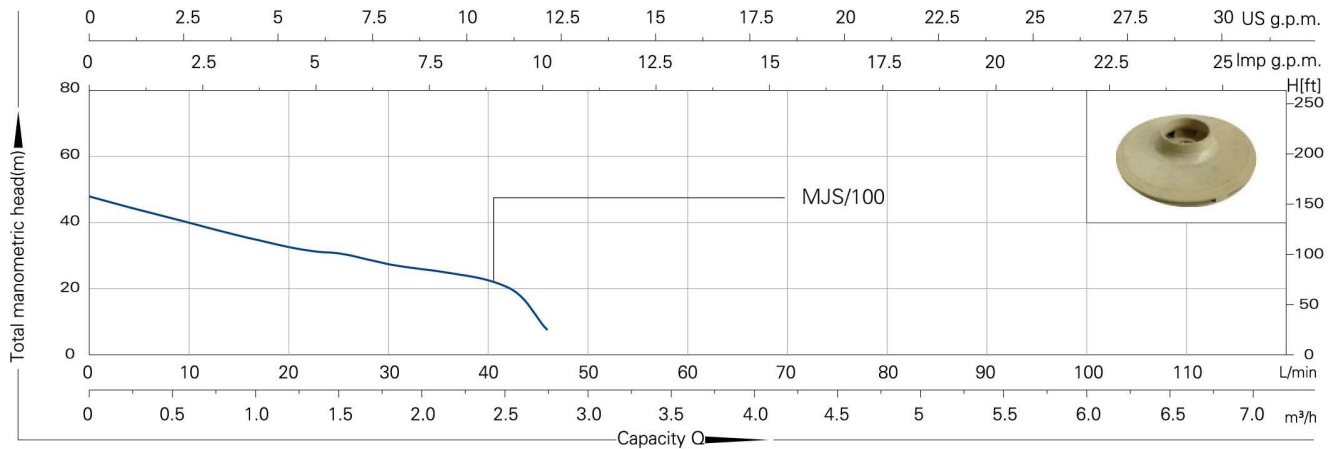
1. C&U bearing
2. Motor with copper winding
3. Built-in thermal protector for single phase motor
4. Insulation class: B
5. Protection class: IP44
6. Max. ambient temperature: +40°C



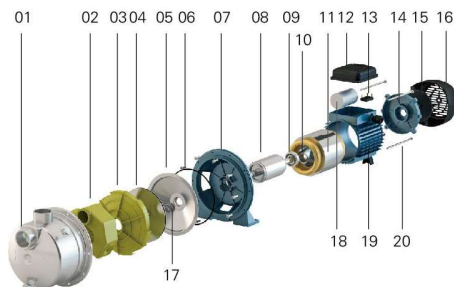
MJS

SELF-PRIMING JET PUMP SERIES PERFORMANCE CHART AT n=2900r/min

PUMP TYPE	POWER		INLET/OUTLET	MAX.FLOW	MAX.HEAD	MAX.SUCT	G.W
	kW	HP					
MJS/100	0.75	1	1"X1"	2.4	28	9	9.8



THE STRUCTURE, CODE AND NAME OF THE PUMP



NO.	NAME	NO.	NAME	NO.	NAME
01	Stainless steel pump body	09	Bearing	17	Mechanical seal
02	Injector	10	Wave washer	18	Capacitor
03	Diffuser	11	Stator	19	Motor Base
04	Impeller	12	Capacitor cover	20	Hexagon head bolt
05	Seal holder	13	wiring terminal		
06	"O" ring	14	Rear end cover		
07	Pump support	15	Fan		
08	Rotor	16	Fan cover		

PUMP

1. Cast iron pump body
2. Stainless steel / Brass impeller
3. AISI 304 shaft
4. Max. liquid temperature: +60°C

MOTOR

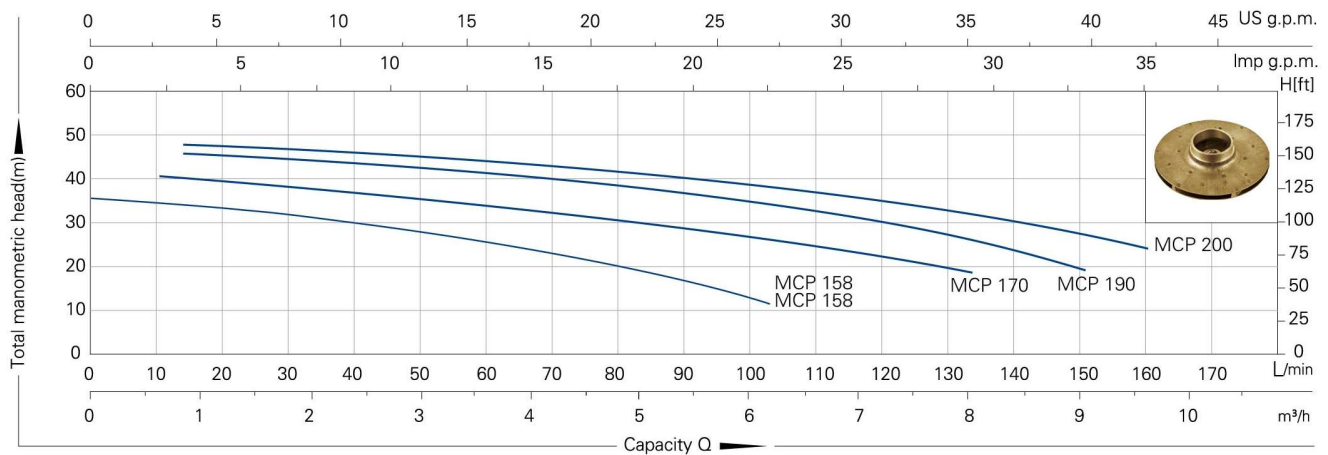
1. C&U bearing
2. Motor with copper winding
3. Built-in thermal protector for single phase motor
4. Insulation class: B
5. Protection class: IP44
6. Max. ambient temperature: +40°C



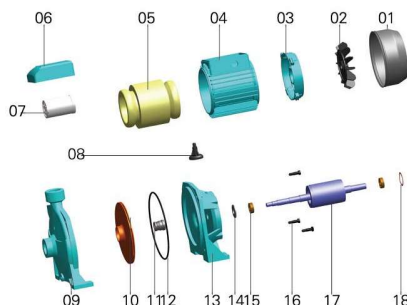
MCP

MICRO CENTRIFUGAL PUMP SERIES PERFORMANCE CHART AT n=2900r/min

PUMP TYPE	POWER		INLET/OUTLET	MAX.FLOW	MAX.HEAD	G.W.	PACKING DIMENSION	QTY
	kW	HP						
MCP 158	0.75	1.00	1"X1"	95	33	14	335X213X274	1500
MCP 158	0.75	1.00	1 1/2"X1 1/2"	110	33	13.5	325X210X270	1575
MCP 170	1.10	1.50	1 1/4"X1"	130	41	20.1	375X225X267	1320
MCP 190	1.50	2.00	1 1/4"X1"	150	42	33.6	390X250X300	990
MCP 200	2.20	3.00	1 1/4"X1"	160	45	38	390X250X300	990



THE STRUCTURE, CODE AND NAME OF THE PUMP



NO.	NAME	NO.	NAME	NO.	NAME
01	Fan cover	07	Capacitor	13	Pump support
02	Fan	08	Arm-brace	14	Thrower
03	Rear end cover	09	Pump body	15	Bearing
04	Base	10	Impeller	16	Rotor
05	Stator	11	Mechanical seal	17	Hexagon headed bolt
06	Capacitor cover	12	"O" ring	18	Wave washer

Da PUMP

PUMP

1. Cast iron pump body
2. Stainless steel / Brass impeller
3. AISI 304 shaft
4. Max. liquid temperature: +60°C

MOTOR

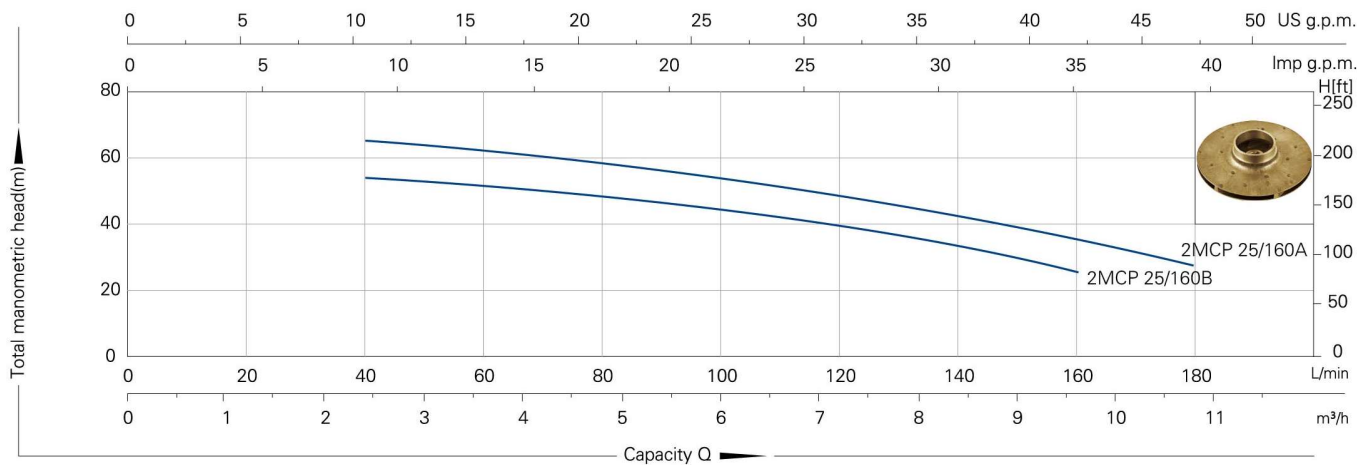
1. C&U bearing
2. Motor with copper winding
3. Built-in thermal protector for single phase motor
4. Insulation class: B
5. Protection class: IP44
6. Max. ambient temperature: +40°C



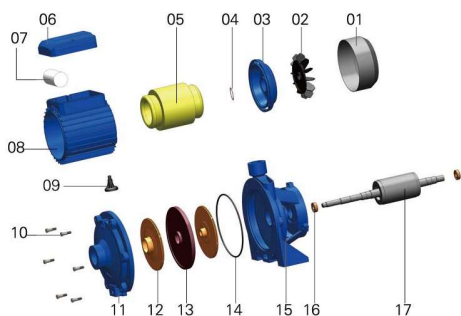
2MCP

MICRO CENTRIFUGAL PUMP SERIES PERFORMANCE CHART AT n=2900r/min

PUMP TYPE	POWER		INLET/OUTLET	MAX.FLOW	MAX.HEAD	G.W.	PACKING DIMENSION	QTY
	kW	HP						
2MCP 25/160B	1.50	2.00	1 1/2"X1"	150	55	25	430X235X280	880
2MCP 25/160A	2.20	3.00	1 1/2"X1"	180	66	27	510X280X330	620



THE STRUCTURE, CODE AND NAME OF THE PUMP



NO.	NAME	NO.	NAME	NO.	NAME
01	Fan cover	07	Capacitor	13	Baffle plate
02	Fan	08	Base	14	"0" ring
03	Rear end cover	09	Arm-brace	15	Pump body
04	Wave washer	10	Hexagon headed bolt	16	Bearing
05	Stator	11	Pump cover	17	Rotor
06	Capacitor cover	12	Impeller		

PUMP

1. Cast iron pump body
2. Stainless steel / Brass impeller
3. AISI 304 shaft
4. Max. liquid temperature: +60°C

MOTOR

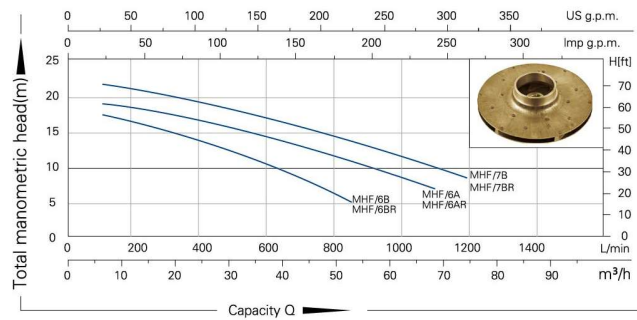
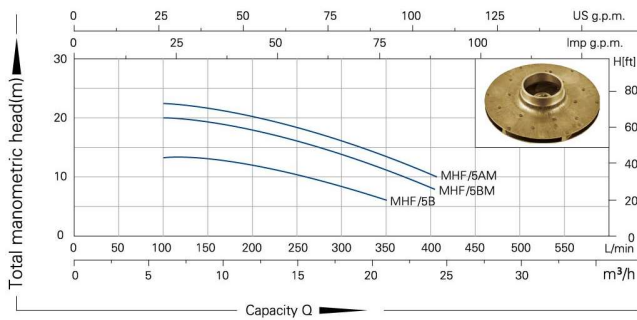
1. C&U bearing
2. Motor with copper winding
3. Built-in thermal protector for single phase motor
4. Insulation class: B
5. Protection class: IP44
6. Max. ambient temperature: +40°C



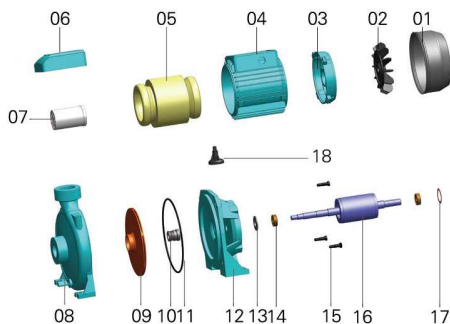
MHF

MICRO CENTRIFUGAL PUMP SERIES PERFORMANCE CHART AT n=2900r/min

PUMP TYPE	POWER		INLET/OUTLET	MAX.FLOW	MAX.HEAD	G.W.	PACKING DIMENSION	QTY
	kW	HP						
MHF/5B	0.75	1.0	2"X2"	350	13.7	15.7	350X205X270	1500
MHF/5BM	1.10	1.5	2"X2"	400	20.2	21.2	415X250X294	950
MHF/5AM	1.50	2.0	2"X2"	400	22.5	22.5	415X250X294	950
MHF/6B	1.50	2.0	3"X3"	850	17.5	29.8	445X279X355	670
MHF/6BR	1.50	2.0	4"X4"	850	17.5	31.0	445X279X355	670
MHF/6A	2.20	3.0	3"X3"	1100	18.5	39.6	518X278X345	600
MHF/6AR	2.20	3.0	4"X4"	1100	18.5	40.5	518X278X345	600
MHF/7B	3.00	4.0	3"X3"	1200	21.8	41.0	518X278X345	600
MHF/7BR	3.00	4.0	4"X4"	1200	21.8	42.0	518X278X345	600



THE STRUCTURE, CODE AND NAME OF THE PUMP



NO.	NAME	NO.	NAME	NO.	NAME
01	Fan cover	07	Capacitor	13	Thrower
02	Fan	08	Pump body	14	Bearing
03	Rear end cover	09	Impeller	15	Hexagon headed bolt
04	Base	10	Mechanical seal	16	Rotor
05	Stator	11	"O" ring	17	Wave washer
06	Capacitor cover	12	Pump support	18	Arm-brace